

**RVN**

**INDICE - INDEX - SOMMAIRE - VERZEICHNIS**

rev.

**RVN-01**

Lancia **VAPORE** - Tube **STEAM**  
Tuyau **VAPEUR** - **DAMPFHAWN**

**00**

06/2009

**RVN-02**

Lancia **ACQUA** - Tube **WATER**  
Tuyau **EAU** - **WASSERHAHN**

**00**

06/2009

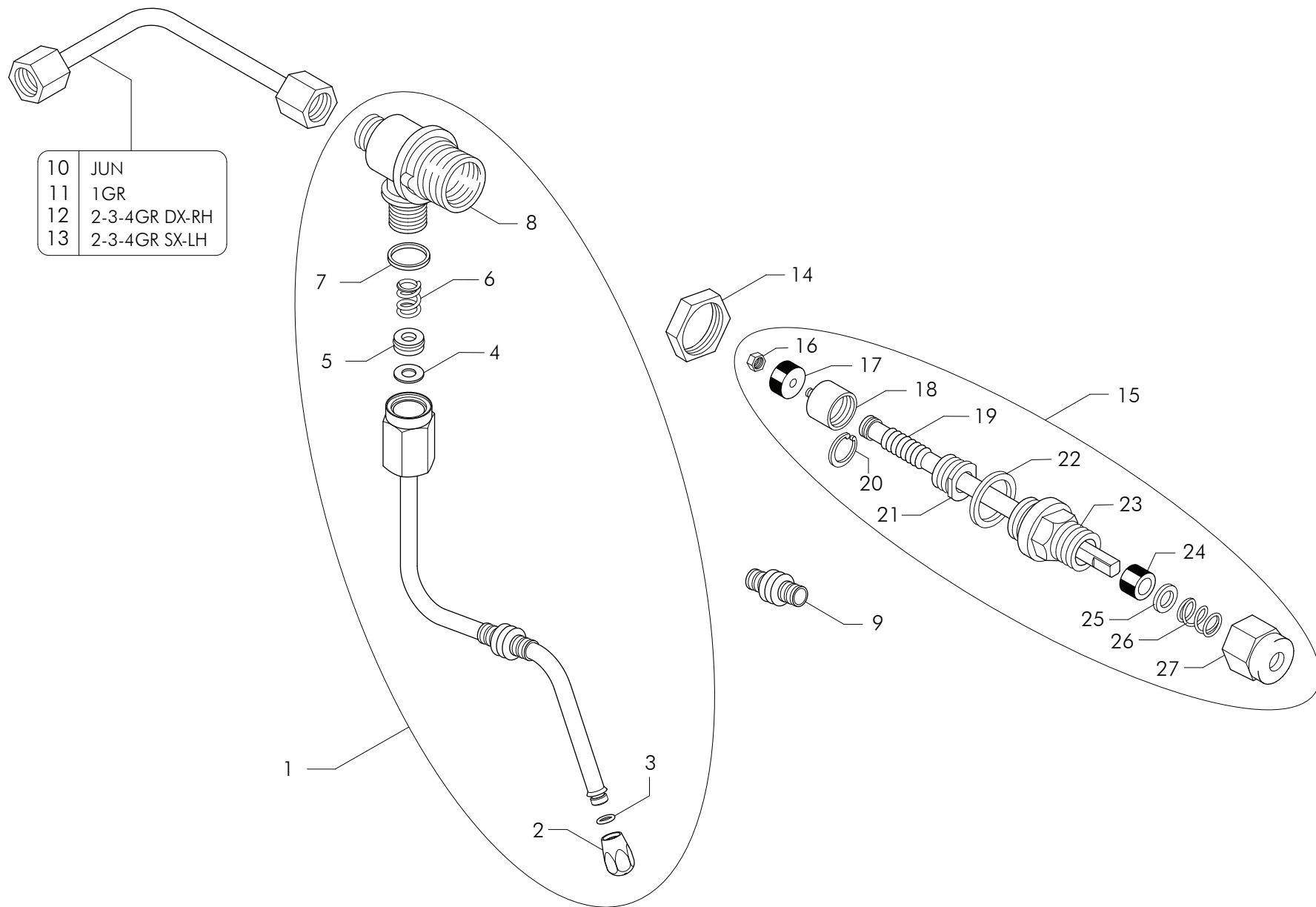
*Lancia  
acqua / vapore*

*Tube  
water / steam*

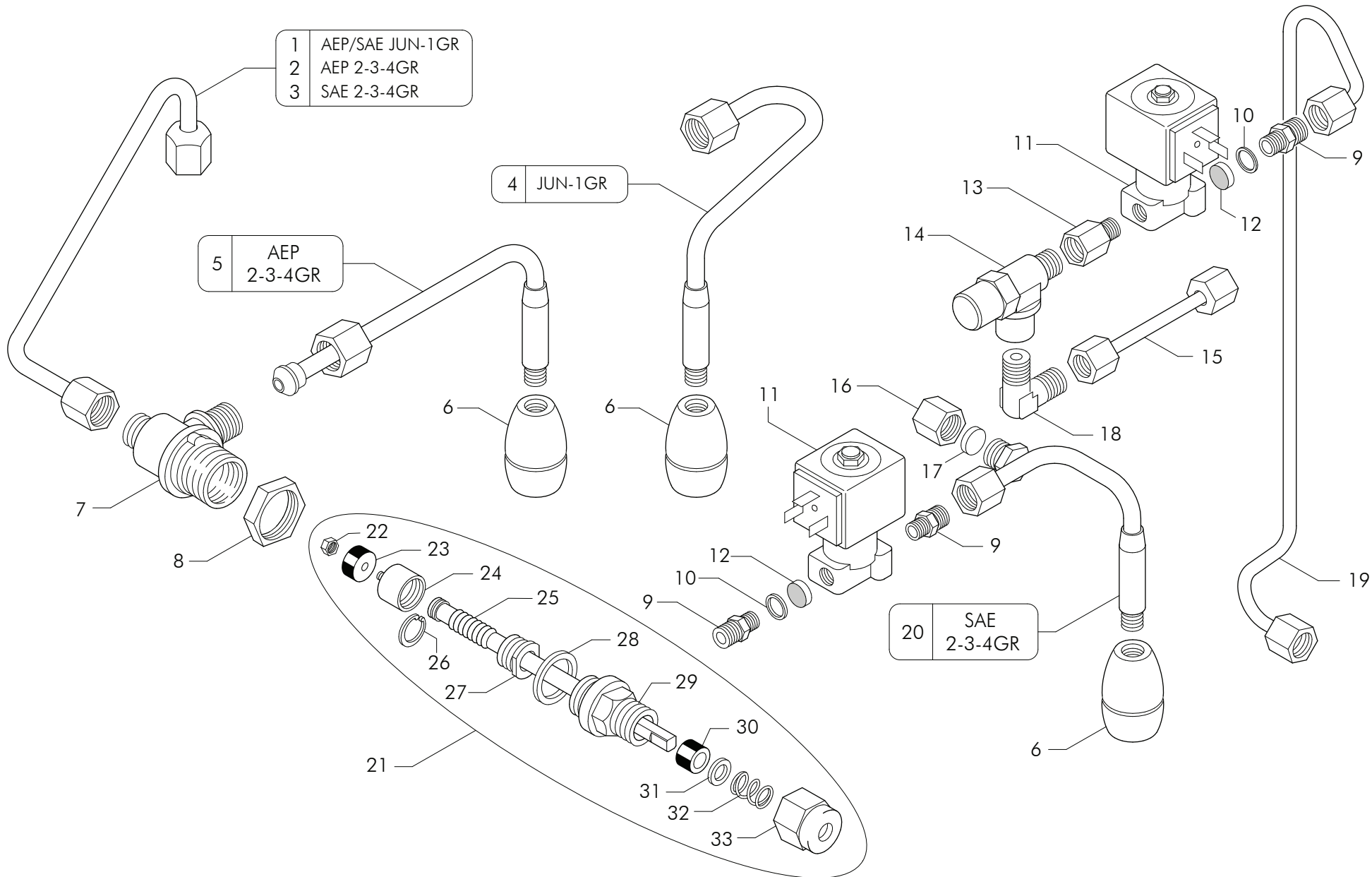
*Tuyau  
eau / vapeur*

*Wasser-dampfhahn*

**VANIA  
U.S.A.**



| Pos | Cod.     | Denominazione - IT -                    | Denomination - GB -                    | Denomination - FR -                    | Denomination - DE -                 |
|-----|----------|---|--|--|-------------------------------------|
| 1   | 25763318 | ASS.TUBO VAP.AISI 304 6X8 L.290         | ASS. STEAM PIPE 304 6X8 L290 LISA+BODY | ENS.TUYAU VAPEUR AISI 304 6X8 L.290 NI | KIT ROHR STEAM AISI 304 6X8 L.290   |
| 2   | 25763080 | SPRUZZATORE VAPORE INOX M8X1 4 FORI     | STEEL STEAM SPRAYER                    | VAPORISATEUR INOX                      | STAHLDAMPFER                        |
| 3   | 12662000 | GUARNIZIONE ORM 0060-15 SPRUZZATORE     | GASKET ORM 0060-15                     | JOINT ORM 0060-15                      | DICHTUNG ORM 0060-15                |
| 4   | 15191000 | RONDELLA TEFLON DADO CANNA VAPORE       | TEFLON BUSHEL FOR STEAM PIPE NUT       | JOINT TEFLON                           | TEFLON-DICHTUNG                     |
| 5   | 12661    | GUARNIZIONE OR CON LUNETTA P.MOLLA      | OR REST FOR ST.STEEL STEAM PIPE        | OR LUNETTE P.RESSORT TUYAU VAP. INOX   | HALBE OR-DICHT.F.FEDER DAMPFROHR ED |
| 6   | 10465001 | MOLLA DE 11,4 DF1,7 AISI 302            | STEAM SPRING S.STEEL                   | RESSORT AISI                           | DAMPF HAHNFEDEN STAHL               |
| 7   | 12010    | GUARNIZIONE TEFLON ACQUA/VAPORE 20X17X2 | PIPE GASKET TEFLON 20X17X2             | JOINT TUYAU TEFLON EAU/VAP TEFLON      | TEFLON-DICHTUNG WASSER/VAP 20X17X2  |
| 8   | 4553003  | CORPO RUBINETTO NI                      | TAP BODY NI ETL                        | CORPS DE ROBINET NI ETL                | HAHNKORPER NI ETL                   |
| 9   | 15296000 | GOMMINO ANTISCOTTATURA D-8              | ANTI-BURNING RUBBER D-8                | ELEMENT ANTI-BRULURE D-8               | GUMMI GEGEN VERBRENNUNGEN F. D-8    |
| 10  | 52001001 | TUBO D-8 L.320 G 2                      | TUBE D-8 L.320                         | TUYAU D-8 L.320                        | ROHR D-8 L.320                      |
| 11  | 52001400 | TUBO D-8 L.380 1GR AR 1                 | TUBE D-8 L.380 1GR AR 1                | TUYAU D-8 L.380 1GR AR 1               | ROHR D-8 L.380 1GR AR 1             |
| 12  | 52001401 | TUBO D-8 L.290 2-4GR AR 2               | TUBE D-8 L.290 2-4GR AR 2              | TUYAU D-8 L.290 2-4GR AR 2             | ROHR D-8 L.290 2-4GR AR 2           |
| 13  | 52001309 | TUBO D-8 L.360 2-4GR SC.TAZ. LD 8       | TUBE D-8 L.360 2-4GR                   | TUYAU D-8 L.360 2-4GR                  | ROHR D-8 L.360 2-4GR                |
| 14  | 25384    | DADO OTTONE M26X1.5                     | BRASS NUT 26X1.5                       | ECROU LAITON 26X1.5                    | MESSING-MUTTER 26X1.5               |
| 15  | 45561001 | ASS.RUB. ACQUA/VAPORE NI                | WATER/STEAM TAP UNIT NI ETL            | ENSEMBLE ROBINET EAU/VAPEUR NI ETL     | WASSER/DAMPF ROHRSATZ NI ETL        |
| 16  | 23029    | DADO INOX M3 UNI 5587 A2                | STEEL NUT M3 UNI 5587 A2               | ECROU INOX M3 UNI 5587 A2              | STHAL MUTTER M3 UNI 5587 A2         |
| 17  | 12203    | GUARNIZIONE HNBR 15X4X4                 | RUBBER GASKET 15X4X4                   | JOINT EN CAOUTCHOUC 15X4X4             | GUMMIDICHTUNG 15X4X4                |
| 18  | 4525616  | PISTONCINO RUBINETTO NI                 | TAP JUMPER NI ETL                      | PISTON ROBINET NI ETL                  | HAHNKOLBEN NI ETL                   |
| 19  | 25309    | ASTA RUBINETTO CROMATA                  | CHROMED TAP SHAFT                      | TIGE ROBINET CHROME                    | HAHNSTANGE CHROM                    |
| 20  | 10001    | ANELLO ARRESTO D6 INOX 316 DIN 6799     | STEEL CIRCLIP 316 DIN 6799             | CIRCLIP INOX 316 DIN 6799              | STAHLHALTENRING 316 DIN 6799        |
| 21  | 4525461  | GHIERA RUBINETTO NI                     | BACK NUT FOR VALVE JUMPER NI ETL       | EMBOUT ROBINET NI ETL                  | HAHNZWINGE NI ETL                   |
| 22  | 12158    | GUARNIZIONE 26X20.5X2                   | GASKET 26X20.5X2                       | JOINT 26X20.5X2                        | DICHTUNG 26X20.5X2                  |
| 23  | 45259983 | RACCORDO RUBINETTO NI                   | TAP FITTING NI                         | RACCORD ROBINET NI                     | HAHNANSCHLUSSTUCK NI                |
| 24  | 12204    | GUARNIZIONE GOMMA RUBINETTO 12.5X7.5X9  | TAP RUBBER GASKET 12.5X7.5X9           | JOINT CAOUTCHOUC ROB. 12.5X7.5X9       | HAHNDICHTUNG 12.5X7.5X9             |
| 25  | 25655    | RONDELLA RUBINETTO                      | TAP WASHER                             | RONDELLE ROBINET                       | HAHNSCHEIBE                         |
| 26  | 10452    | MOLLA RUBINETTO ACQUA/VAPORE N4         | WATER/STEAM TAP SPRING N4              | RESSORT DE ROBINET EAU-VAPEUR N4       | WASSER/DAMPF HAHNFEDER N4           |
| 27  | 25385001 | DADO PREMISTOPPA RUBINETTO              | TAP STUFFING NUT                       | ECROU DE PRESSE-ETOUPE ROBINET         | STOPFBUCHSE MUTTER - HAHN           |



| Pos | Cod.     | Denominazione - IT -                   | Denomination - GB -                | Denomination - FR -                | Denomination - DE -               |
|-----|----------|--|------------------------------------|------------------------------------|-----------------------------------|
| 1   | 52901011 | TUB.D-8 L.330 G 12 NI                  | TUBE D-8 L.330 G12 NI ETL          | TUYAU D-8 L.330 G12 NI ETL         | ROHR D-8 L.330 G12 NI ETL         |
| 2   | 52001310 | TUBO D-8 L.290 2-4GR SC.TAZ. LD 9      | TUBE D-8 L.290 2-4GR LD9           | TUYAU D-8 L.290 2-4GR LD9          | ROHR D-8 L.290 2-4GR LD9          |
| 3   | 52901492 | TUBO D-8 L.315 AR 111 NI               | TUBE D-8 L.315                     | TUYAU D-8 L.315                    | ROHR D-8 L.315                    |
| 4   | 52900358 | TUBO D-8 L.175 H2O SX DV 51/A NI       | TUBE D-8 L.175                     | TUYAU D-8 L.175                    | ROHR D-8 L.175                    |
| 5   | 52901480 | TUBO D-8 L.235 AR 101 NI               | TUBE D-8 L.235                     | TUYAU D-8 L.235                    | ROHR D-8 L.235                    |
| 6   | 25763002 | SPRUZZATORE H2O INOX FISSO             | S.STEEL WATER NOZZLE               | ATOMISEUR D' EAU INOX              | WASSERDAMPFER                     |
| 7   | 4553003  | CORPO RUBINETTO NI                     | TAP BODY NI ETL                    | CORPS DE ROBINET NI ETL            | HAHNKORPER NI ETL                 |
| 8   | 25384    | DADO OTTONE M26X1.5                    | BRASS NUT 26X1.5                   | ECROU LAITON 26X1.5                | MESSING-MUTTER 26X1.5             |
| 9   | 4525707  | RACCORDO 1/8X1/4 NI                    | CONNECTOR 1/8X1/4 NI               | RACCORD 1/8X1/4 NI                 | MESSING 1/8X1/4 NI                |
| 10  | 12155    | GUARNIZIONE CU 8.5X5X1                 | COPPER GASKET 8.5X5X1              | JOINT CU 8.5X5X1                   | CU DICHTUNG 8.5X5X1               |
| 11  | 18161998 | ELETTROVALVOLA AEA 230V VE140.2IRA.5   | SOL.VALVE WATER REFILL 230V UR ETL | ELECTROV. 230V UR ETL              | VENTIL AWZ 230V UR ETL            |
| 11  | 18161999 | ELETTROVALVOLA AEA 115V VE140.2IRA.5   | SOL.VALVE WATER REFILL 115V UR ETL | ELECTROV. 115V UR ETL              | VENTIL AWZ 115V UR ETL            |
| 12  | 10251001 | FILTRO IN ACCIAIO D-8 SP.0,3           | STEEL FILTER D-8 - 0.3 THICK       | FILTRE EN ACIER D-8 EP.0,3         | STAHLFILTER D-8 SP.0,3            |
| 13  | 4525743  | RIDUZIONE 1/4FX1/8M V.A.R. NI          | REDUCTION 1/4FX1/8M V.A.R.         | REDUCTION 1/4FX1/8M V.A.R.         | REDUKTION 1/4FX1/8M V.A.R.        |
| 14  | 25715004 | RACCORDO MISCELATORE GRUPPI NI         | GROUP MIXER FITTING                | RACCORD MELANGEUR GROUPES          | ANSCHLUSS MISCHER EINHEITEN       |
| 15  | 52901428 | TBS.D-6 L.50 THE MISC AR 53 NI         | TUBE D-6 L.50 AR 53 NI             | TUYAU D-6 L.50 AR 53 NI            | ROHR D-6 L.50 AR 53 NI            |
| 16  | 25782    | TAPPO FEMMINA 1/4 GAS                  | 1/4 GAS FEMALE TAP                 | BOUCHON FEMELLE 1/4 GAZ            | INNENANSCHLUSSSTÖPSEL 1/4 GAS     |
| 17  | 12007    | GUARNIZIONE KLINGERSIL4400             | KLINGERSIL4400 SEAL                | JOINT KLINGERSIL4400 POUR BOUCHON  | DICHTUNG KLINGER SIL4400 X DECKEL |
| 18  | 4523203  | RACCORDO OTT.GOM.D6,2 1/4X1/4 CON NI   | ELBOW BRASS CONNECTOR NI ETL       | RACCORD COUDE LAITON NI ETL        | MESSING FITTING NI ETL            |
| 19  | 52901447 | TUBO D-6 L.435 THE MISC AR 50/A NI     | TUBE D-6 L.435                     | TUYAU D-6 L.435                    | ROHR D-6 L.435                    |
| 19  | 52901461 | TUBO D-6 L.655 THE MISC AR 82 NI       | TUBE D-6 L.655                     | TUYAU D-6 L.655                    | ROHR D-6 L.655                    |
| 20  | 52901505 | TUBO D-8 L.255 THE MISC AR 52/A NI     | TUBE D-8 L.255                     | TUYAU D-8 L.255                    | ROHR D-8 L.255                    |
| 21  | 45561001 | ASS.RUB. ACQUA/VAPORE NI               | WATER/STEAM TAP UNIT NI ETL        | ENSEMBLE ROBINET EAU/VAPEUR NI ETL | WASSER/DAMPF ROHRSATZ NI ETL      |
| 22  | 23029    | DADO INOX M3 UNI 5587 A2               | STEEL NUT M3 UNI 5587 A2           | ECROU INOX M3 UNI 5587 A2          | STHAL MUTTER M3 UNI 5587 A2       |
| 23  | 12203    | GUARNIZIONE HNBR 15X4X4                | RUBBER GASKET 15X4X4               | JOINT EN CAOUTCHOUC 15X4X4         | GUMMIDICHTUNG 15X4X4              |
| 24  | 4525616  | PISTONCINO RUBINETTO NI                | TAP JUMPER NI ETL                  | PISTON ROBINET NI ETL              | HAHNKOLBEN NI ETL                 |
| 25  | 25309    | ASTA RUBINETTO CROMATA                 | CHROMED TAP SHAFT                  | TIGE ROBINET CHROME                | HAHNSTANGE CHROM                  |
| 26  | 10001    | ANELLO ARRESTO D6 INOX 316 DIN 6799    | STEEL CIRCLIP 316 DIN 6799         | CIRCLIP INOX 316 DIN 6799          | STAHLHALTENRING 316 DIN 6799      |
| 27  | 4525461  | GHIERA RUBINETTO NI                    | BACK NUT FOR VALVE JUMPER NI ETL   | EMBOUT ROBINET NI ETL              | HAHNZWINGE NI ETL                 |
| 28  | 12158    | GUARNIZIONE 26X20.5X2                  | GASKET 26X20.5X2                   | JOINT 26X20.5X2                    | DICHTUNG 26X20.5X2                |
| 29  | 45259983 | RACCORDO RUBINETTO NI                  | TAP FITTING NI                     | RACCORD ROBINET NI                 | HAHNANSCHLUSSTUCK NI              |
| 30  | 12204    | GUARNIZIONE GOMMA RUBINETTO 12.5X7.5X9 | TAP RUBBER GASKET 12.5X7.5X9       | JOINT CAOUTCHOUC ROB. 12.5X7.5X9   | HAHNDICHTUNG 12.5X7.5X9           |
| 31  | 25655    | RONDELLA RUBINETTO                     | TAP WASHER                         | RONDELLE ROBINET                   | HAHNSCHEIBE                       |
| 32  | 10452    | MOLLA RUBINETTO ACQUA/VAPORE N4        | WATER/STEAM TAP SPRING N4          | RESSORT DE ROBINET EAU-VAPEUR N4   | WASSER/DAMPF HAHNFEDER N4         |
| 33  | 25385001 | DADO PREMISTOPPA RUBINETTO             | TAP STUFFING NUT                   | ECROU DE PRESSE-ETOUPE ROBINET     | STOPFBUCHSE MUTTER - HAHN         |